



Floors

**Ideal where ceilings can not be disturbed or where lower floor occupancy does not allow fire upgrade.**

### Description

Rock mineral wool slab coated on one side with a smoke and fire resistant sealant.

Light weight and quick to install, the batts are cut to suit on site and fitted using compression and Intumastic bonding between joists.

### Dimensions and Colour

Size: 1200 x 600 x 70 mm (Firetherm also offer a cut to size service for larger projects)

Density: 140 kg/m<sup>3</sup>

Colour: white: coated one side only

### Fire Testing

- Intudeck has been rigorously tested to BS 476 Pts 20 and 22: 1987 at a UKAS accredited laboratory for up to 90 minutes fire integrity and insulation.

### Features

- Up to 90 minutes fire protection
- Simple installation method
- Does not disturb ceilings
- Contributes to acoustic upgrade
- Optifire technology identification

### Applications

Used to upgrade the fire resistance of timber floors to 90 minutes fire integrity and insulation.

Often used where a lath and plaster ceiling must not be disturbed, or where access is not possible from the soffit face because of occupancy of a dwelling or congestion caused by mechanical services.

Suitable for use in both small units such as flats over shops, as well as large projects such as period or commercial buildings, multi-occupancy buildings, heritage properties and buildings of significant historical value.

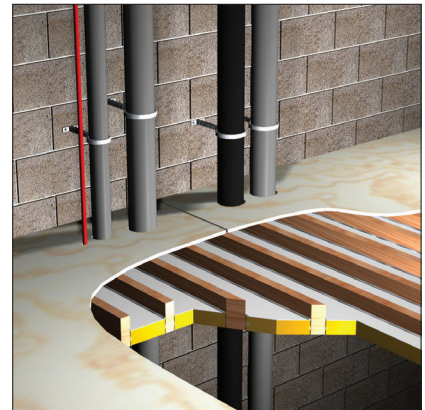
### Typical Service Types

Combustible pipework, steel pipework and cables can be accommodated. Please consult Firetherm Technical for detailed solutions.

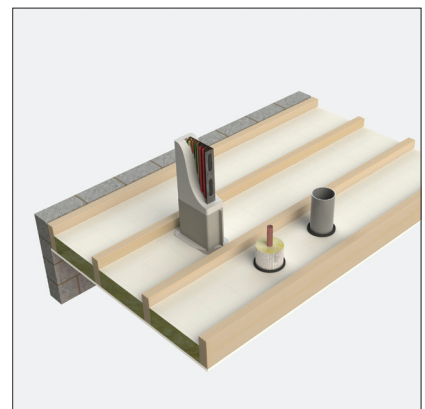
### Typical Installation

1. Observe Intudeck safety data sheet before commencing work.
- 2) Lift sufficient floorboards to allow Intudeck to be installed.
- 3) Clear any remaining pugging from the ceiling/floor void and clear dust from the sides of the joists to improve the adhesion of the bonding Intumastic.
- 4) Apply a 10 mm bead of Intumastic to the side of each joist 35 mm from the bottom. If adhesion is difficult, spray the joist with water from a small garden spray.
- 5) Measure the gap between joists and cut an Intudeck batt along the 1200 mm side to fit tightly and under compression.
- 6) Place loosely in position at 45° between joists. Using a timber board to spread the load, ease into final position using gentle foot pressure.
- 7) When finally positioned, apply a 5 mm bead of Intumastic all round the seal and on the butt joints.
- 8) Inspect and check completed work and re-fix floorboards.

### Typical Details



Intudeck within floor void



Intudeck between joists