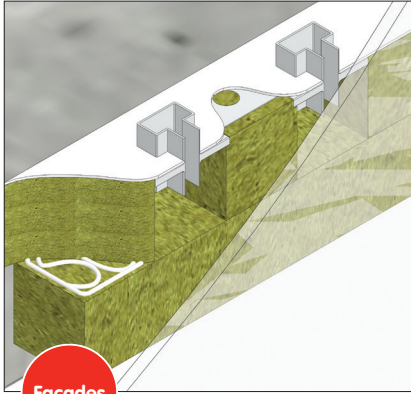


Intumastic Soft Joint

Movement
30%

Integrity
up to
240
minutes

Insulation
up to
240
minutes



Facades

Ideal for high movement, fast-fit curtain wall/slab edge/vertical cladding fire seals.

Description

Intumastic Soft Joint is supplied as a two part system (slab and coating).

Intumastic Soft Joint is applied on a strand and binder orientated rock fibre compressible slab, utilising a modified polymeric ablative coating to provide a fire and smoke seal.

Dimensions and Colour

Rock core

Length: 1200 long x 100 wide x 250 mm deep (can be cut to suit cavity requirements)

Density: 64 kg/m³

Intumastic Pour Grade

5 litre tub, 20 litre pail, 200 litre drum
30% movement capable

Fire Testing

- Tested at Exova BM Trada to BS EN 1366-4: 240/240 Integrity and Insulation up to 120 mm. 180/180 Integrity and Insulation up to 240 mm
- Third party accredited by Exova Warrington Fire, certificate number CF 578



Maximum Openings

- Maximum opening 240 mm

Features

- Fully tested at Exova BM TRADA up to 4 hours integrity and insulation

Applications

Intumastic Soft Joint has been specifically designed for high movement fast fit curtain wall, slab-edge and vertical cladding fire seals. The system requires no fixings* for horizontal gaps up to 200 mm, subject to surrounding substrates.

The system is suitable for horizontal and vertical applications and can offer an acoustic capability of up to 46 dB (cavity wall) limited by substrate.

* Fixing required if cladding is non-fire rated

Typical Service Types

None expected. However, combustible pipework, steel pipework and cables can be accommodated. Please consult Firetherm Technical for detailed solutions.

Typical Installation

Intumastic Soft Joint has a 30% overall movement capability. Intumastic (pour or spray grade) is required to be installed to a depth of 3 mm.

For vertical applications, the mastic must be applied to both sides.

If Intumastic Soft Joint is to be installed before cladding is applied, the system should be cut 10 mm larger than the maximum gap size.

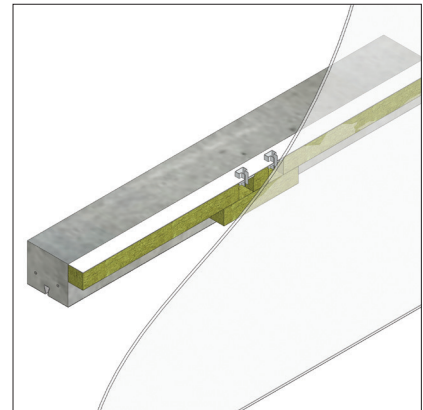
Fixing clips should be cut 10-20 mm less than the minimum gap size. 3 fixings are required per 1.2 m.

The system has sufficient compression to allow cladding to be installed with ease.

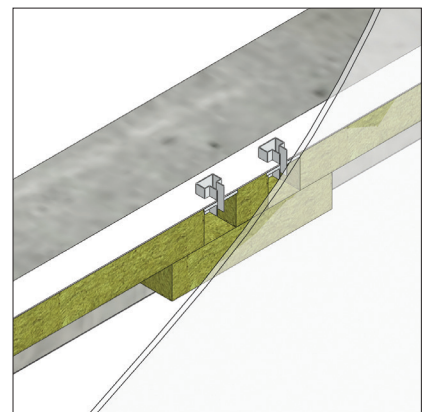
NB: For two part site applied application, Intumastic Pour Grade will find its own level but should be wet trowelled to a consistent finish.

Also suitable for spray application.

Typical Details



Slab edge/curtain wall seal



Intumastic Soft Joint

Firetherm Intumescent & Insulation Supplies Limited
Unit F Acorn Industrial Park, Crayford Road, Crayford, Kent DA1 4FT

Phone: 01322 551010 Fax: 01322 552727 Email: sales@firetherm.com www.firetherm.com

This data sheet offers guidance related to fire testing results and does not offer methodology of the installation of the product. Suitability of this product and its usage to substrate type, service type and fire requirement must be confirmed before installation commences. A specific detail relevant to installation must be requested. Firetherm recommend that all fire stopping products should be installed by a third party accredited fire stopping contractor or competent person. Full application details and methodology instructions should be requested before installation of this product commences. Standard terms and conditions apply at all times.

