

Joint filler providing a high level of movement suitable for gaps up to 100 mm.

Description

Intuspan is a very pliable joint filler, black in colour and factory applied with a revolutionary 102 times volume expansion intumescent compound.

A sandwich of intumescent strip, consisting of a modified rubber base filled with graphite and combustion modified foam. Provides a high level of movement suitable for gaps up to 100 mm and provides 2 hour protection with no adhesive required.

Sizes and Colours

Sizes: 25 mm x 25 mm x 1 m
50 mm x 50 mm x 1 m
75 mm x 50 mm x 1 m
100 mm x 100 mm x 1 m
150 mm x 100 mm x 1 m

Colour: black

Fire Testing

- Tested to BS EN 1366-4 and BS 476 Pt 22 to provide 2 hours fire stability and integrity



Features

- Can accommodate regular cycles of high or low amplitude movement
- Unaffected by moisture
- Easy to install using finger pressure even in uneven gaps
- A dry system
- For vertical or horizontal wall applications

Applications

Intuspan is used to provide a soft seal to movement joints from 25 mm to 100 mm wide, while offering up to 2 hours fire protection.

It is tolerant of very large movement and is used in areas where standard mastic joints are not suitable, such as large gaps over 35 mm, acoustic isolation joints and areas subject to regular cycles of expansion and contraction or vibration, both in compression and shear, where reliability is vital.

In addition, Intuspan is particularly suitable for buildings being designed for earthquake zones or military buildings designed to withstand high ground movement shockwaves.

All joints should be designed to BS 6213.

Installation

Ensure gaps to be filled are the correct specified size and consistent width. Excessive construction tolerance should be notified to the site manager or engineer.

Confirm period of fire resistance specified corresponds to product specification as delivered to site.

Check for obstructions to the gap such as ties between steel and masonry and mortar snots. Intuspan will have to be cut around unavoidable obstructions such as ties.

4. Carefully remove a length of Intuspan from its packaging and starting from one end compress between finger a thumb and insert into gap to either side of the partition/floor, or in the middle, whichever is convenient. Use straight, close butt joints.

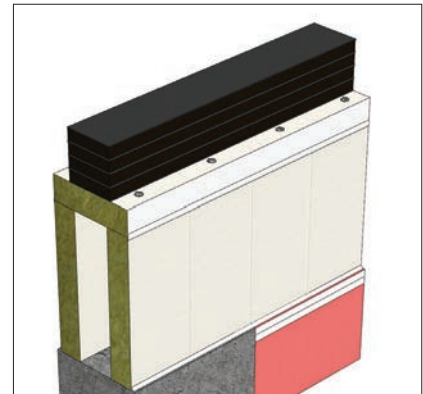
5. It is not normally necessary to use adhesive to retain Intuspan in a gap, nor is it necessary on butt joints. If excessive construction tolerance causes installation problems report the matter to the site manager or engineer immediately.

6. If it is intended to install a mastic bead over Intuspan then Intuspan should be set back into the joint to an appropriate depth, normally 10 mm would be sufficient. Ask if unsure.

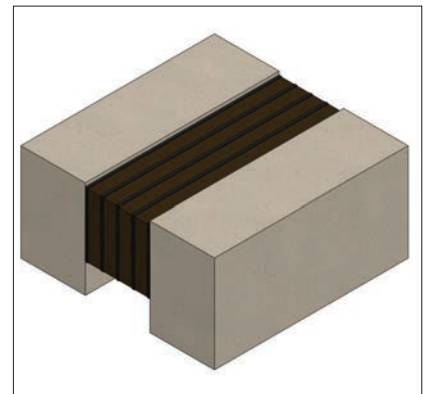
7. Finally inspect the finished work to ensure no sections are loose and the job looks tidy and workmanlike.

8. Place off cuts and waste in strong plastic bags for disposal.

Typical Details



Intuspan and Intubatt at head of wall



Intuspan in concrete floor

Firetherm Intumescent & Insulation Supplies Limited
Unit F Acorn Industrial Park, Crayford Road, Crayford, Kent DA1 4FT
Phone: 01322 551010 Fax: 01322 552727 Email: sales@firetherm.com www.firetherm.com

