

Doors

Designed to provide a fire seal between door and frame.

Description

Intustrip contains a 2 mm thick, high pressure manipulated graphite-based rubber which is encased within a robust PVC carrier.

Intustrip may be provided in white or brown and with or without a brush smoke seal.

Firetherm Intustrip is designed to be installed within a machined recess in a suitable timber door or frame set.

Sizes and Colours

Lengths: 2.1 m or 1.05 m
(other sizes on application)

Sizes: 10 x 4 mm
15 x 4 mm
20 x 4 mm
25 x 4 mm

Standard colours available are brown and white. Other colours available to special order. All colours available both with and without a smoke seal.

Fire Testing

- Tested at Exova Warrington Fire to BS 476 Pt 23 and BS EN 1366
- Tested to BS 476 Pt 31.1 (smoke penetration through door set)

Features

- Unique graphite manipulation ensures a high and consistent expansion
- Unaffected by moisture
- Self-adhesive backing for speed fixing within machined recesses
- Available in individual lengths or in full tube quantities

Applications

Intustrip is a high pressure graphite fire seal designed to close a specified gap between a door and its frame or between double doors.

The design of the product is to effectively stop the passage of fire and or smoke for a tested duration to a suitable door configuration type.

Typical Configuration Types

Single doors or within frame configuration.

Double door or to external frame and Internal joint configuration.

Smoke seal available dependant on specification or local requirements.

For use within suitably tested fire rated doors only.

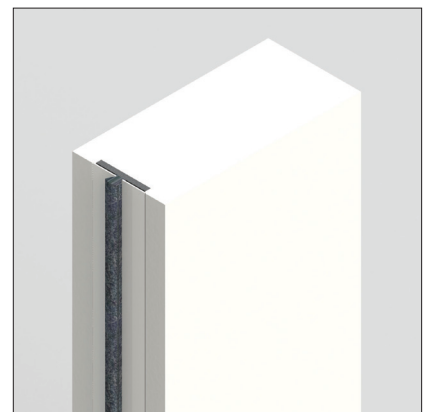
Installation

Firetherm recommend that all fire stopping products should be installed by a third party accredited fire stopping contractor. Full application details and methodology instructions should be requested before installation of this product commences.

Typical Details



Intustrip with timber frame



Intustrip with PVC frame