

Provides up to 120 minutes fire resistance for ventilated openings.

Description

An intumescent matrix supported in a steel frame. Under normal conditions, air is free to pass through in either direction with a free area of approx. 80%. Anti-vermin mesh is incorporated as standard. In a fire, the matrix is sealed by the expansion of the fibre/graphite composition.

Decorative grilles can be provided to special order.

Sizes and Facings

Sizes up to 600 x 600 mm can be accommodated (others on application).

Thickness: 44 mm

Fire Testing

- Tested to BS 476 Pt 22 and BS EN 1366-3
- Tested to BS 476 Pt 22 for 120 minutes

Features

- Approx. free area 80%
- Moisture and vermin resistant

Applications

Firetherm Intuvent is designed to provide up to 120 minutes fire resistance to ventilation openings in fire doors and openings in fire compartments required for air transfer.

It can be supplied with a range of decorative grilles.

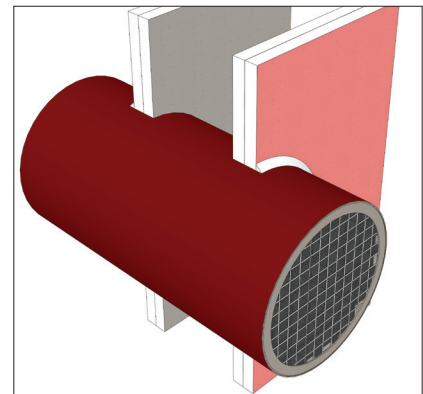
Installation

1. Cut the opening so that the Intuvent is an interference fit in the door or compartment face.
2. Locate into position and secure using 2 panel pins to each edge on both sides.
3. Run a 6 mm bead of fire resistant mastic around the Intuvent after installation to ensure a gas tight fit.
4. Please allow a 2 mm tolerance on each dimension.

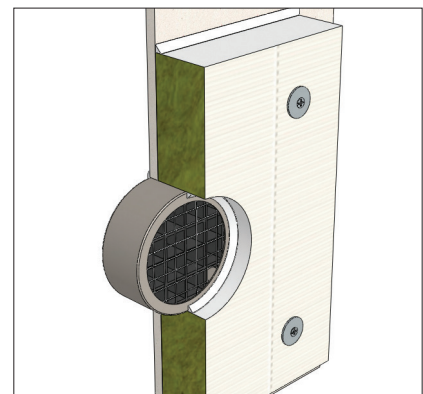
Specification

Install Intuvents to fire seal (openings in doors, walls or air handling ducts) to provide (½ hr, 1hr or 2hr) fire integrity fully in accordance with Firetherm's installation instructions.

Typical details



300 mm circular Intuvent through dry lining



Intuvent within Intubatt