

## A strong, fast-fit flexible fire seal for curtain wall, slab edge and vertical cladding applications.

### Description

Intubatt 3 is supplied pre-configured, ablative coated on a single side and factory cured. Intubatt 3 is a strand and binder orientated rock fibre compressible slab, utilising a modified polymeric ablative coating to provide a fire and smoke seal. Intubatt 3 has a 7.5% overall movement capability.

### Dimensions and Colour

Size: 1200 x 600 x 100 mm  
Weight: 8 kg (+/- 0.5 kg) (0.72 m<sup>2</sup>)  
Density: 100 kg/m<sup>3</sup> nominal  
Colour: off white  
Ablative coating:  
1 mm factory applied and cured with Optifire tracers.

### Fire Testing

- Tested at Exova BM Trada to BS EN 1366-4 and BS 476/20/22
- Third party accredited by Exova Exova Warrington Certification, certificate number CF 580



### Maximum Openings

- Facade and internal movement and slab edge seals up to 600 mm (maximum gap width) +/- 7.5% movement

### Features

- Low cost and simple install
- Fully tested at Exova BM TRADA up to 4 hours integrity
- Easy to cut
- Fully identifiable using Optifire
- Next day delivery available
- Service capable

### Additional Products Required

Intumastic, \*Z- Clips (fixing spikes).

### Applications

Intubatt 3 has been specifically designed as a strong, fast-fit curtain wall/slab-edge /vertical cladding\* flexible fire seal.

The system requires no fixings\* for horizontal gaps up to 200 mm.

Intubatt 3 comprises of two components both of which have been pre-configured by Firetherm to achieve outstanding fire and movement capabilities. The system is suitable for horizontal and vertical applications and can offer an acoustic capability of up to 52 dB (floor slab), limited by substrate.

Client is required to add Intumastic to all joints to create an effective smoke seal.

For use within: floor seals, slab to slab, slab to cladding\*, slab to blockwork, slab to glazing\*. Can be used horizontally or vertically.

If the product is to be installed vertically you must request the double coated option from our sales team.

\* Spikes are to be included on non-fire rated or flexible claddings

### Typical Service Types

None expected.

Combustible pipework, steel pipework and cables can be accommodated. Please consult Firetherm Technical for detailed solutions.

### Installation

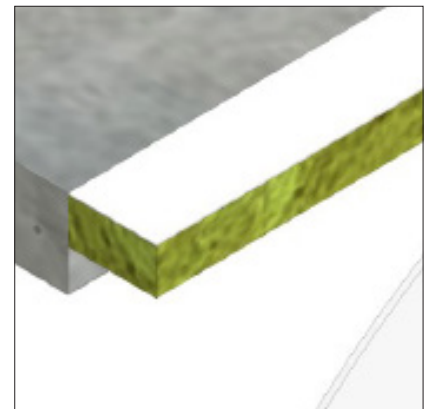
Facade and internal movement and slab edge seals up to 600 mm (maximum gap width +/- 7.5% movement).

NOTE: The Integrity and Insulation rating of this product is limited to the capability of the surrounding substrates, we do not permit the use of this product against combustible cladding.

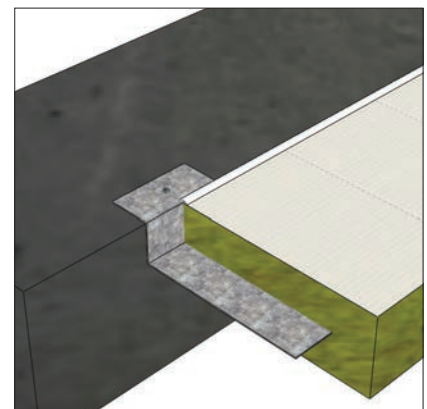
### Storage & Shelf Life

Intubatt 3 has a 50 year shelf life when stored in shaded, dry conditions between -50°C and +65°C.

### Typical Details



Intubatt 3



Close up of Intubatt 3 support bracket

Firetherm Intumescent & Insulation Supplies Limited  
Unit F Acorn Industrial Park, Crayford Road, Crayford, Kent DA11 4FT  
Phone: 01322 551010 Fax: 01322 552727 Email: sales@firetherm.com www.firetherm.com

This data sheet offers guidance related to fire testing results and does not offer methodology of the installation of the product. Suitability of this product and its usage to substrate type, service type and fire requirement must be confirmed before installation commences. A specific detail relevant to installation must be requested. Firetherm recommend that all fire stopping products should be installed by a third party accredited fire stopping contractor or competent person. Full application details and methodology instructions should be requested before installation of this product commences. Standard terms and conditions apply at all times.

