

Fully identifiable, fire resistant ablative skinned rock mineral wool board. Used for the re-instatement of service openings passing through fire compartment walls and floors.

Description

Intubatt is a factory finished unique multi-layered, low resin bonded, rock mineral fibre board. Firetherm ablative coated on both faces with our unique Optifire-identifiable coating. Manufactured under controlled factory conditions to ISO 9001 to the required thickness and specification. Intubatt may be over coated using a suitable emulsion or eggshell paint for decorative purposes.

Dimensions and Colour

Size: 1200 x 600 x 50 mm
1200 x 600 x 70 mm
Weight: 8 kg (+/- 0.5 kg) (0.72 m²)
Density: 140 kg nominal
*180 kg also available
Colour: Off white
Coating: 1.00 mm - incorporates Optifire traceability

*Greater acoustic performance

Fire Testing

- Tested at Exova BM Trada to BS EN 1366-3 and BS 476 Pt 20/21/22
- Tested at Exova Warrington Fire to BS 476 Pt 20, 21 and 22
- Third party accredited by Exova Warrington Fire, certificate number CF 580



Maximum Openings

- Maximum opening framed
3000 x 2400 mm flexible construction
- Maximum opening wall
1500 x 1500 mm
2000 x 1100 mm
- Maximum opening pattress
1400 x 400 mm

Features

- Water repellent core
- Fully identifiable using Optifire
- Easy to cut and flexural
- Service movement up to 7.5% (+/- 3-75%), maximum 3.75 mm
Fire Deflection +/- 3.75%, maximum 45 mm
- Fully tested for up to 240 minutes integrity and insulation
- Service capable
- Air pressure tested up to 2000 Pa

Applications

Intubatt is used to reinstate compartment wall and floor openings to maintain the required fire resistance, and assist with the reinstatement of acoustic capability. Intubatt is suitable for use around services such as suitably supported fire rated dampers, pipe work and electrical cabling, against the passage of fire providing up to 4 hours integrity and insulation in blockwork and up to 120 minutes integrity and insulation in drywall.

Typical Service Types

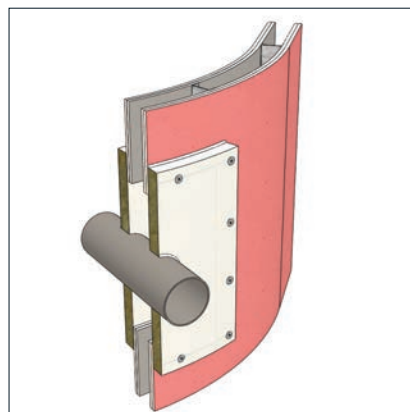
- Cables
- Steel pipes
- Insulated non-combustible services
- Copper pipes
- Cable trays
- Combustible pipes
- Dampers
- Ducting

Firetherm recommend that all fire stopping products should be installed by a competent person or accredited fire-stopping contractor. Full and detailed application methodology instructions are available and should be requested before installation commences.

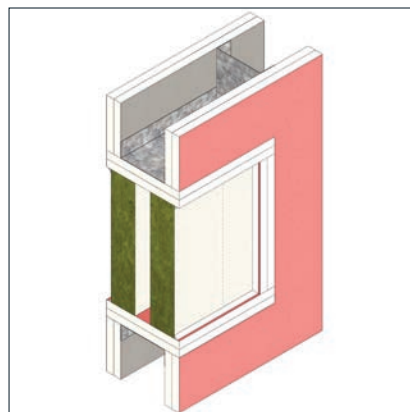
Installation

1 x 50 mm Intubatt up to 120 minutes integrity up to 120 minutes insulation.
2 x 50 mm Intubatt up to 240 minutes integrity up to 240 minutes insulation.
For service fire insulation, contact Firetherm.
Acoustic capability of up to 59 dB within a 1 m² opening.

Typical Dry Lining Details



Curved dry lining wall pattress



Dry lined wall with 2 lined layers on Intubatt each side